



# Tower Crane Safety

Tower cranes are commonly used to build large structures, such as skyscrapers. If they are not properly inspected, maintained, or operated, they can create serious hazards on construction sites. Fatalities and injuries can occur from the crane collapsing, electrocutions, or being struck by a load or part of the crane.

## Antonio's Story

A tower crane was being used to lift a steel beam to...

How could this incident have been prevented?

Have you known or heard of anyone who was injured or killed by a tower crane? If so, what happened?

## Remember This

3/4 Any personnel involved in the lift should be...

3/4 CEÁ ~ æjā, ^āā ] ^! • [ } ^ { ~ • cāā } • ] ^ & cāc @ ^ā & ! æ } ^ā - [ ! ā ^ & ^ • • āc ^ ā , ^ æ ! ā [ ! ā ā æ { æ \* ^ ā ā ~ [ ! ^ ā ~ • ^ É

3/4

3/4 Keep clear of overhead power lines and maintain a...

3/4 DO NOT stand under a suspended load at any...

3/4 W • ^ ā c æ \* ā j ā } ^ • ā c [ ā & [ ] c ! [ ! ā ] [ æ ā • É ā p ^ c ^ ! ā c ! ^ ā c [ ā • c [ ] ā æ ā { [ c ā } \* ā j [ æ ā ā , ā c @ ā ^ [ ~ ! ā @ æ } ā • É ā

3/4 Communicate using radio and hand signals to...

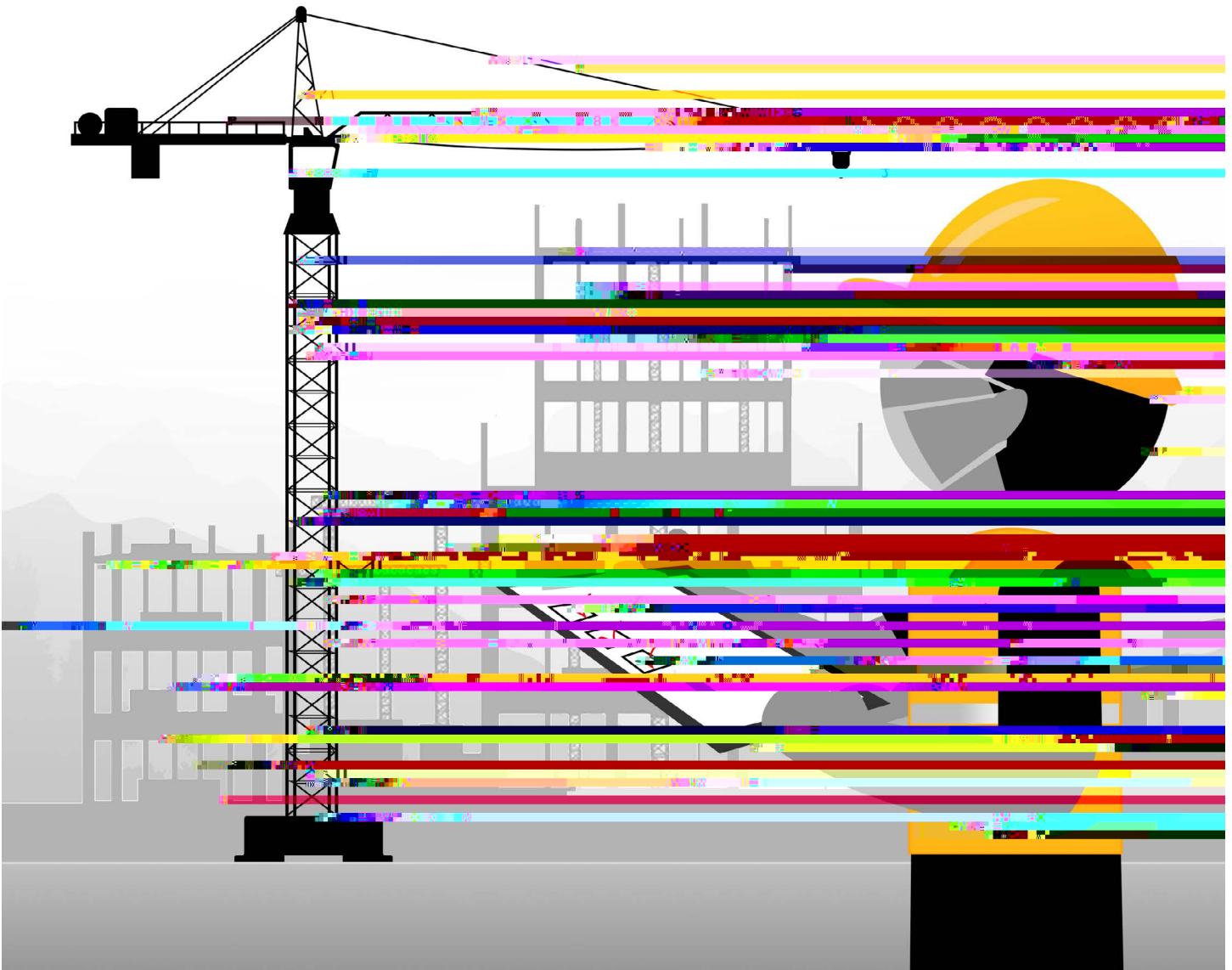
## How can we stay safe today?

Y @ æ c ā , ā j ā , ^ ā ā [ ā æ c ā c @ ^ ā , [ ! \ • ā c ^ ā c [ ā ] ^ c ^ } c ā ā } b ~ ! ā ^ • ā , @ ā j ā , [ ! \ ā } \* ā , ā c @ ā c [ , ^ ! ā & ! æ } ^ • Ñ

- 1. \_\_\_\_\_
2. \_\_\_\_\_



# Tower Crane Safety



Monitor wind speeds and **DO NOT** operate the crane if they are greater than those

specified in the crane manufacturer's manual.

DO NOT operate the crane if the wind speed is greater than 20 mph.

DO NOT operate the crane if the wind speed is greater than 10 mph.

DO NOT operate the crane if the wind speed is greater than 5 mph.